

# #521 - \$368,950

3 Bedroom, 2.5 Bath

1366 SF of Living Space

View: Mt. Rainier & Cascade Mountains

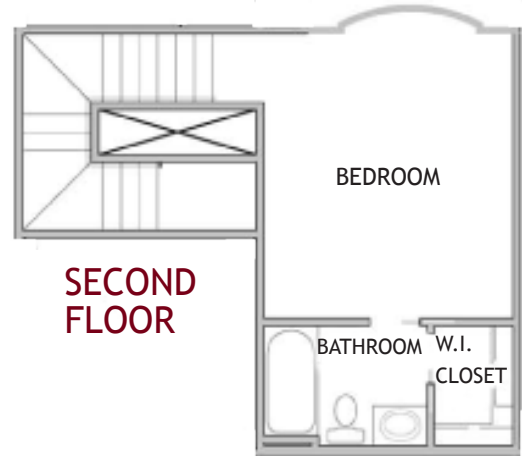
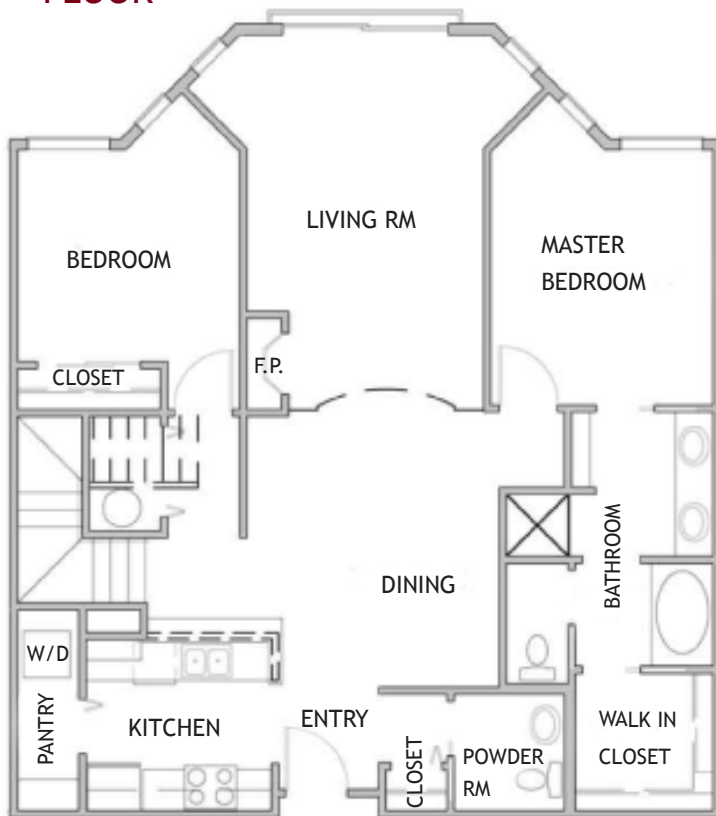
Secured Parking/Storage: #245-246/#245

HOA Dues: \$266.83

MLS#: 10443

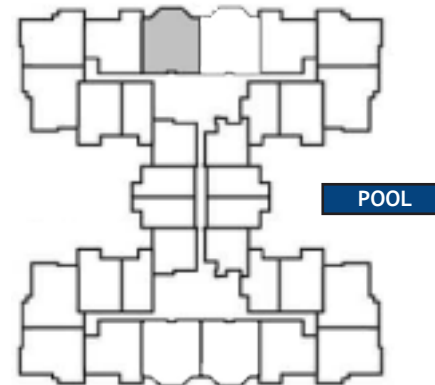
Monthly Mortgage\*  
as low as: \$2181

## MAIN FLOOR



## SECOND FLOOR

*Mt. Rainier & Cascade Mountains View*



# APEX

*Penthouses*

*Prices & availability subject to change without notice.*

\*Subject to approval. Restrictions apply. Subject to change without notice. See Sales Manager for details.



Holland Cohen, 206.245.5277  
h.cohen@solutionpartnersnw.com